

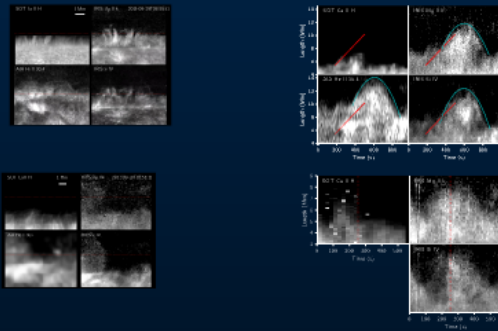
An IRIS look at spicules

Tiago M. D. Pereira

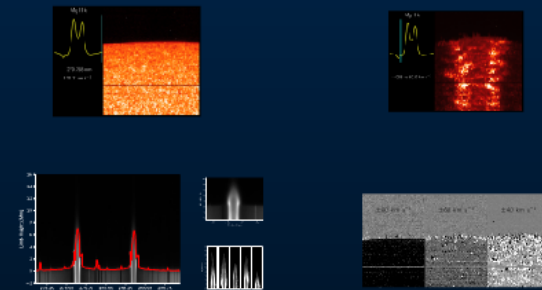
with Bart De Pontieu, Mats Carlsson



Dynamics



Multispectral



Summary

- IRIS slit-jaws bridge Ca II spicules and higher temp filters
- **More co-observations with Hinode needed!**
- Preliminary results: longer spicules in IRIS filters, higher prevalence of parabolas, spicules continuing after fading from Ca H, consistent with heating
- **IRIS rasters very useful to find connection of spicules with lower and higher layers**
 - Spicules in Mg II h&k wings easily seen against background, even on disk
 - **Mg II h/k double peaked along most of spicular length, suggesting dense material**

goo.gl/1zXtsu



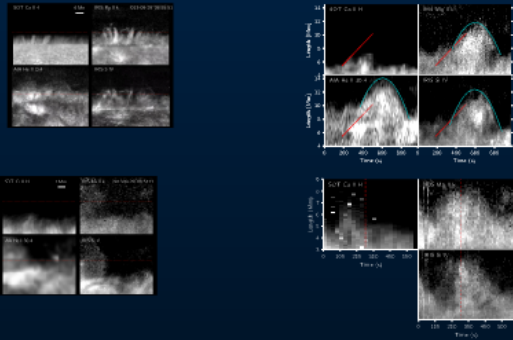
An IRIS look at spicules

Tiago M. D. Pereira

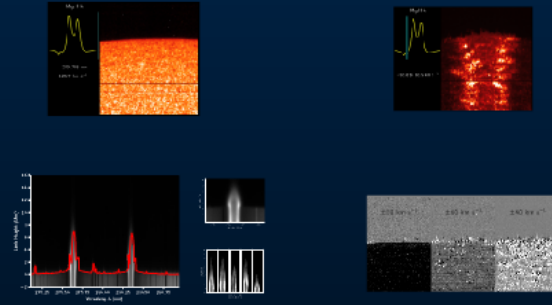
with Bart De Pontieu, Mats Carlsson



Dynamics



Multispectral



Summary

- IRIS slit-jaws bridge Ca II spicules and higher temp filters
- **More co-observations with Hinode needed!**
- Preliminary results: longer spicules in IRIS filters, higher prevalence of parabolas, spicules continuing after fading from Ca H, consistent with heating
- IRIS rasters very useful to find connection of spicules with lower and higher layers
 - Spicules in Mg II h&k wings easily seen against background, even on disk
 - Mg II h&k double peaked along most of spicular length, suggesting dense material

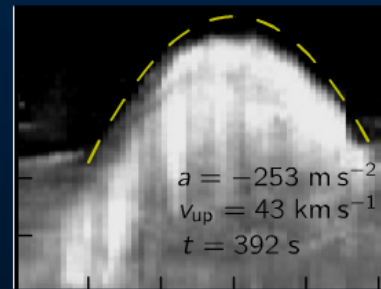
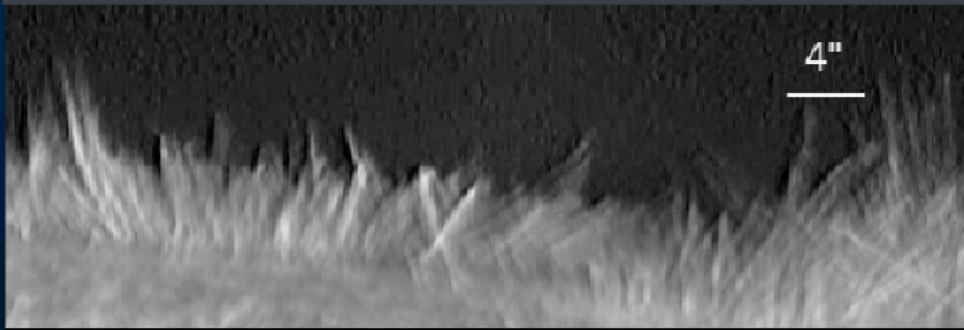
goo.gl/1zXtsu



Context

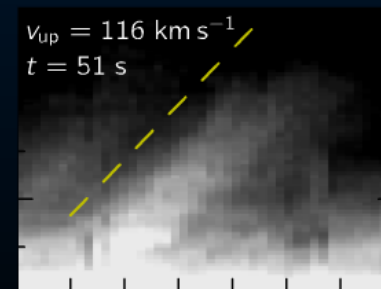
Type I spicules

(seen mostly in AR)



Type II spicules

(seen mostly in CH, QS)



Hinode/SOT Ca II H

TMDP, De Pontieu, Carlsson, 2012, ApJ, 759, 18

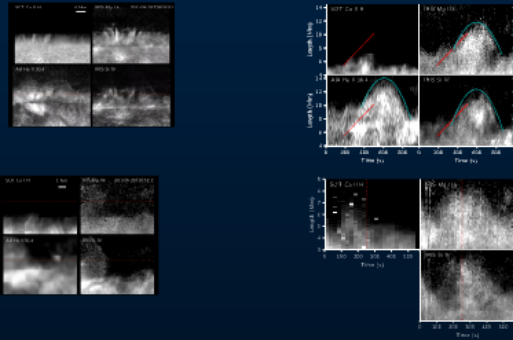
An IRIS look at spicules

Tiago M. D. Pereira

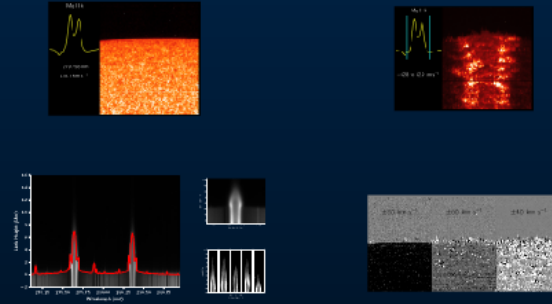
with Bart De Pontieu, Mats Carlsson



Dynamics



Multispectral



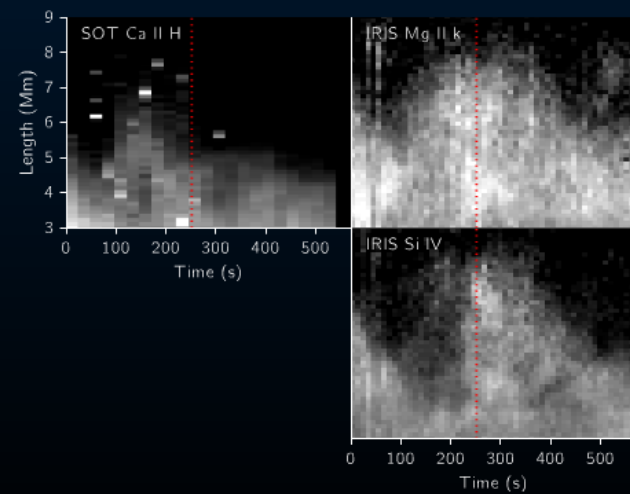
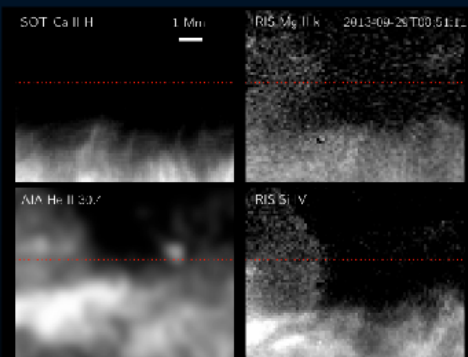
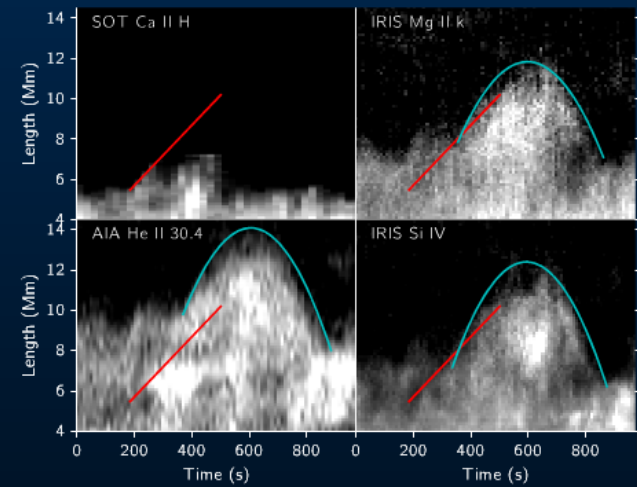
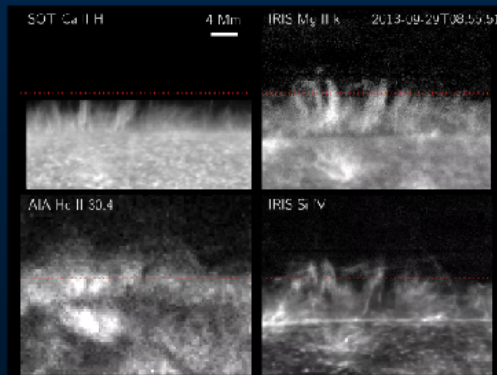
Summary

- IRIS slit-jaws bridge Ca II spicules and higher temp filters
- **More co-observations with Hinode needed!**
- Preliminary results: longer spicules in IRIS filters, higher prevalence of parabolas, spicules continuing after fading from Ca H, consistent with heating
- IRIS rasters very useful to find connection of spicules with lower and higher layers
 - Spicules in Mg II h&k wings easily seen against background, even on disk
 - Mg II h&k double peaked along most of spicular length, suggesting dense material

goo.gl/1zXtsu



Dynamics



SOT Ca II H

4 Mm



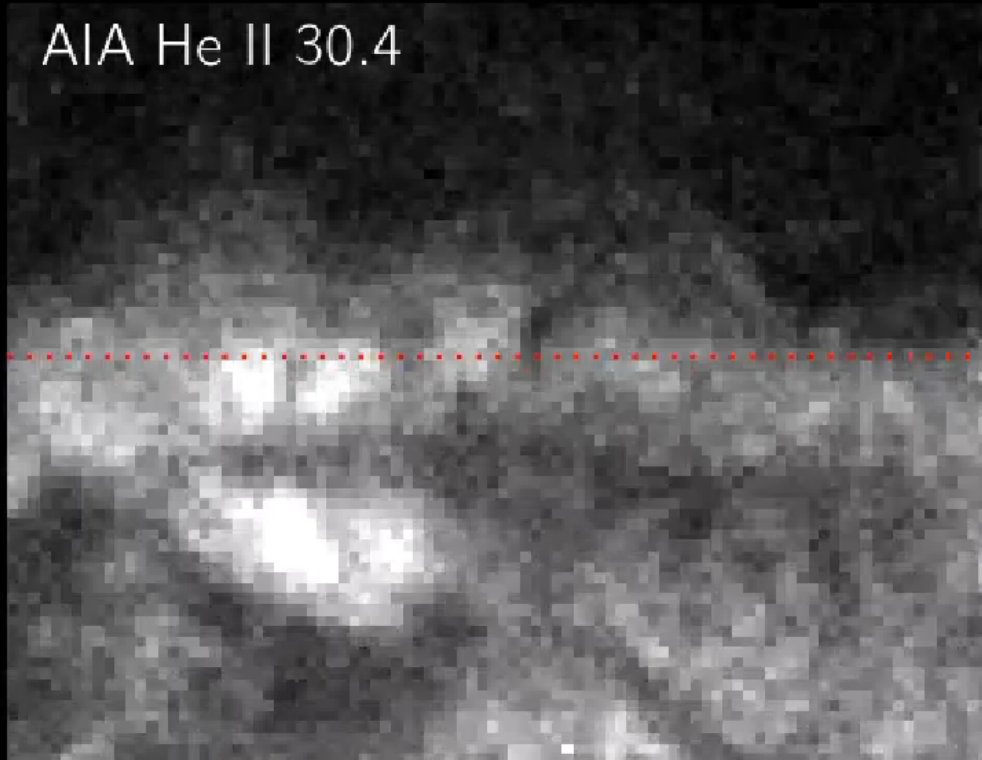
IRIS Mg II k

2013-09-29T08:55:51



AIA He II 30.4

IRIS Si IV



SOT Ca II H

4 Mm



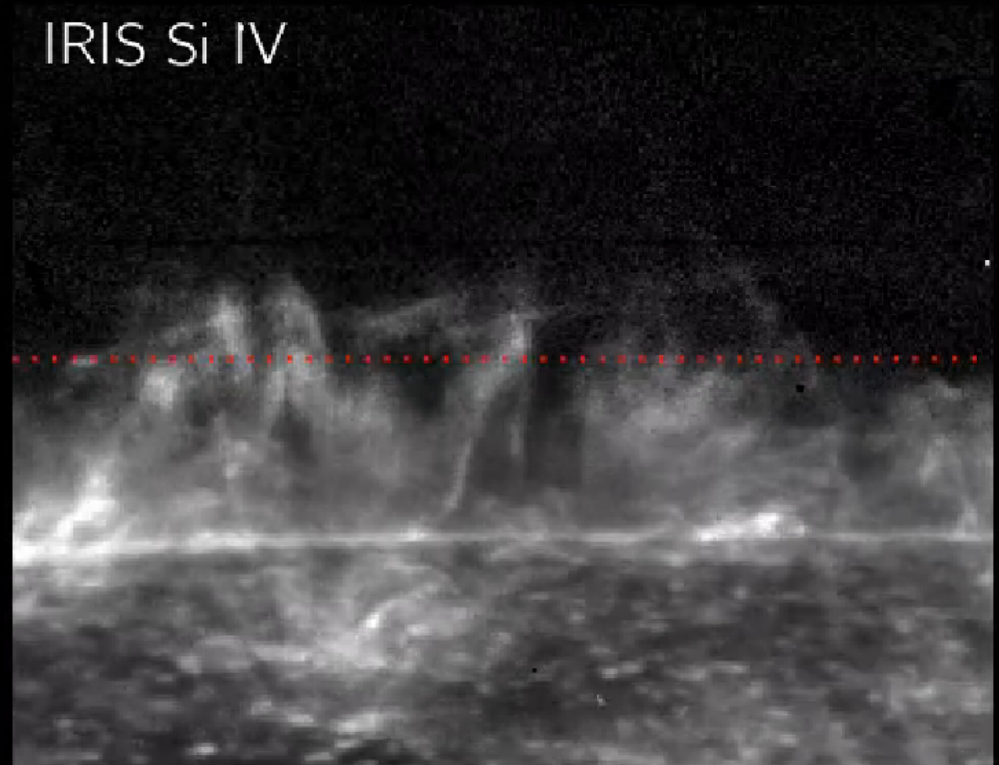
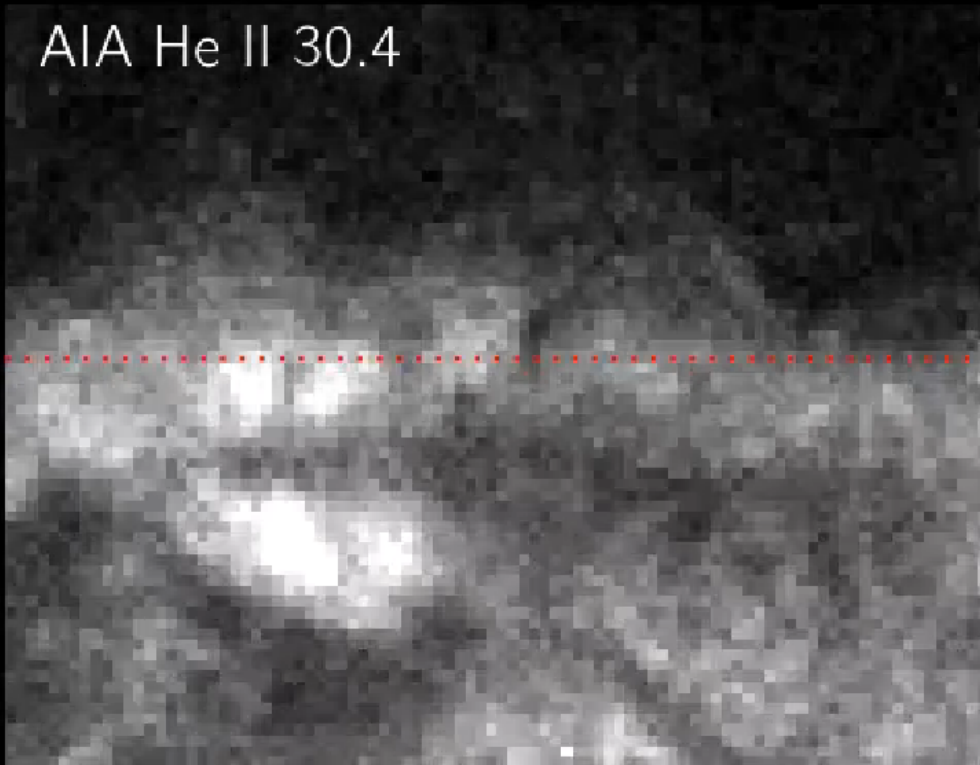
IRIS Mg II k

2013-09-29T08:55:51



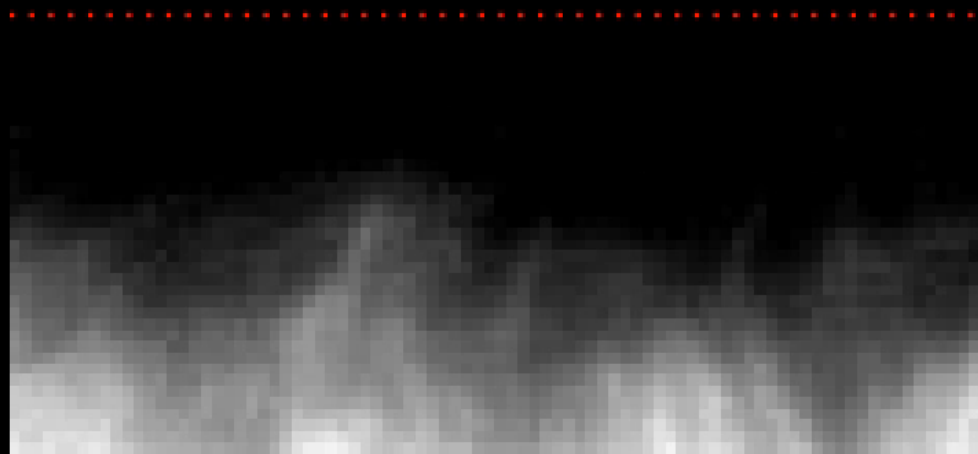
AIA He II 30.4

IRIS Si IV



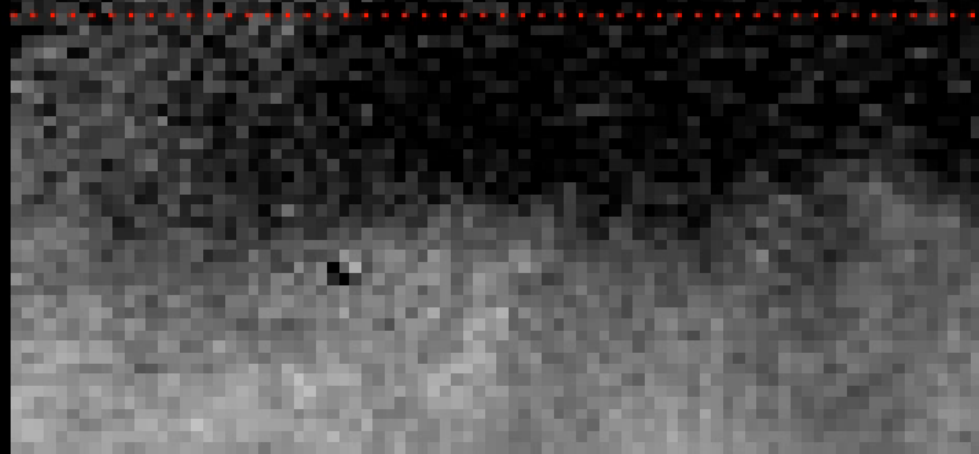
SOT Ca II H

1 Mm

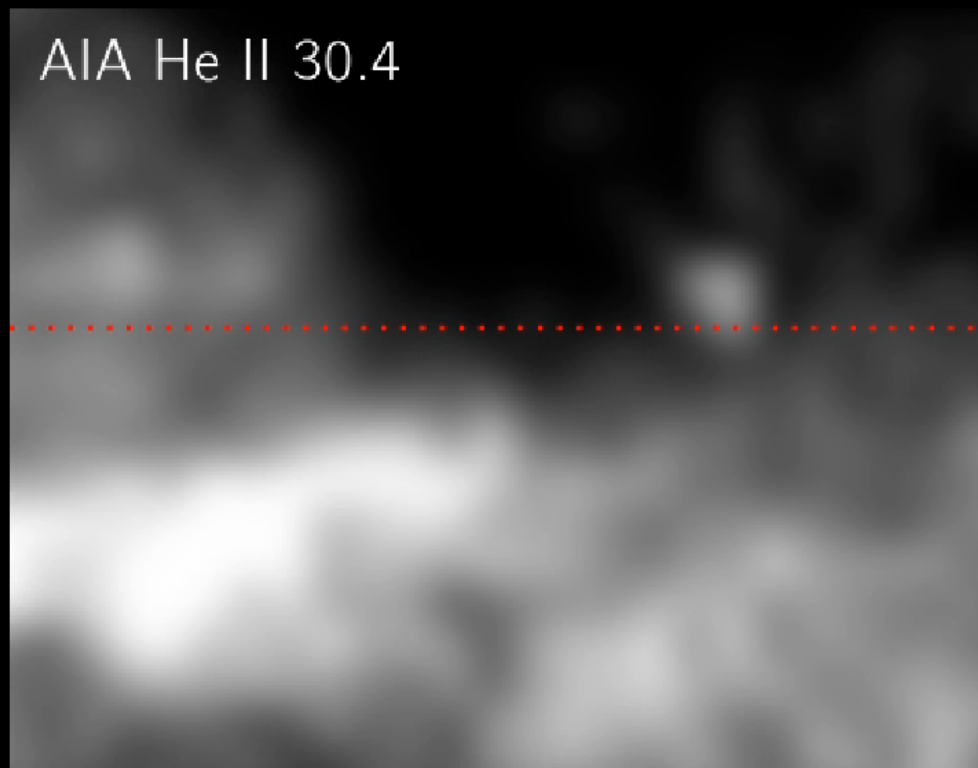


IRIS Mg II k

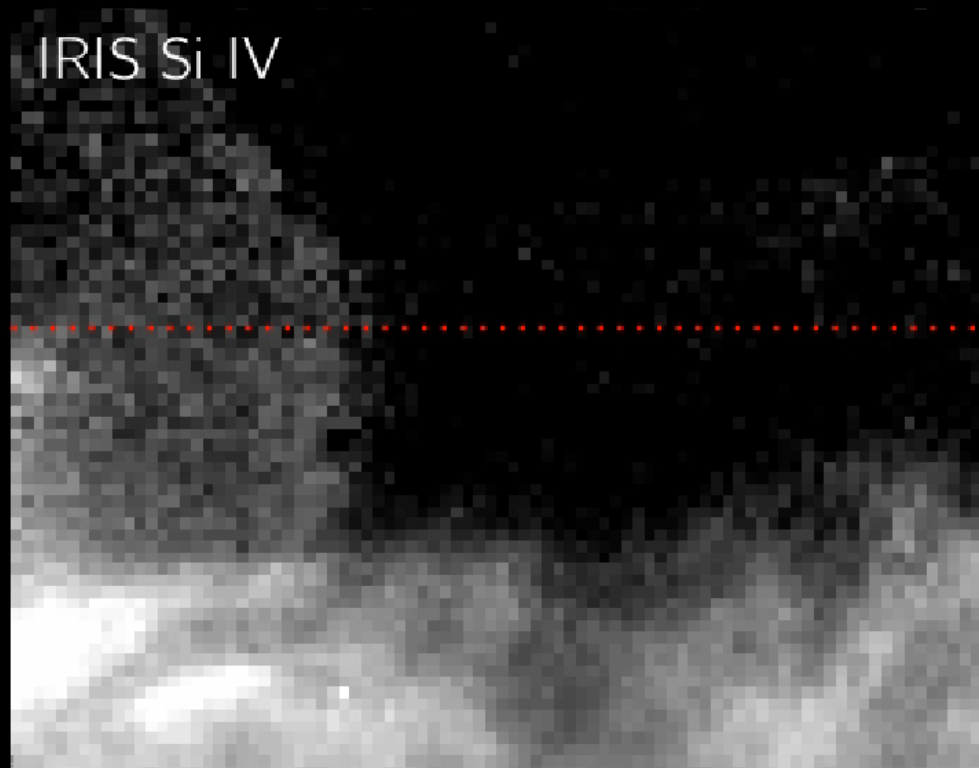
2013-09-29T08:51:11

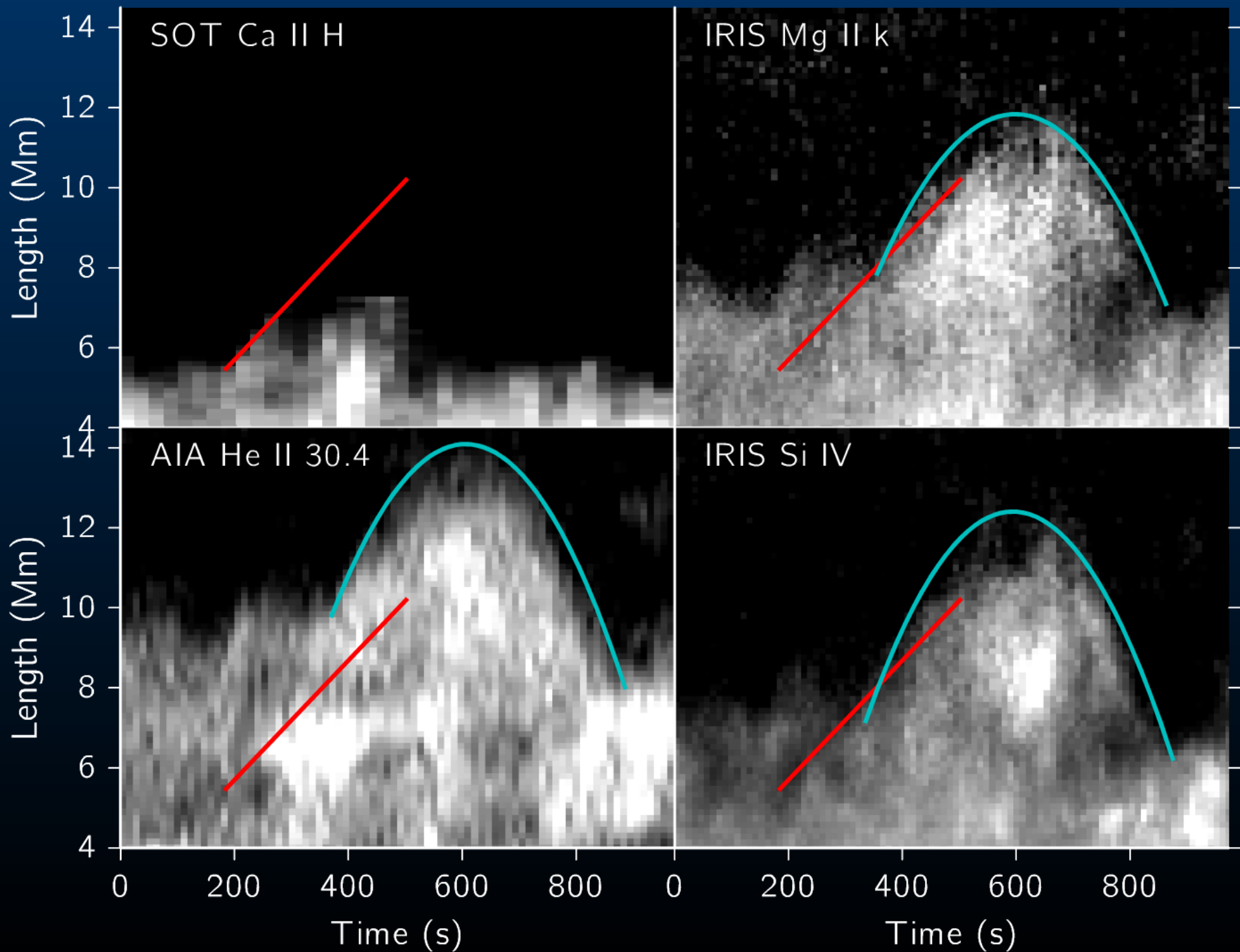


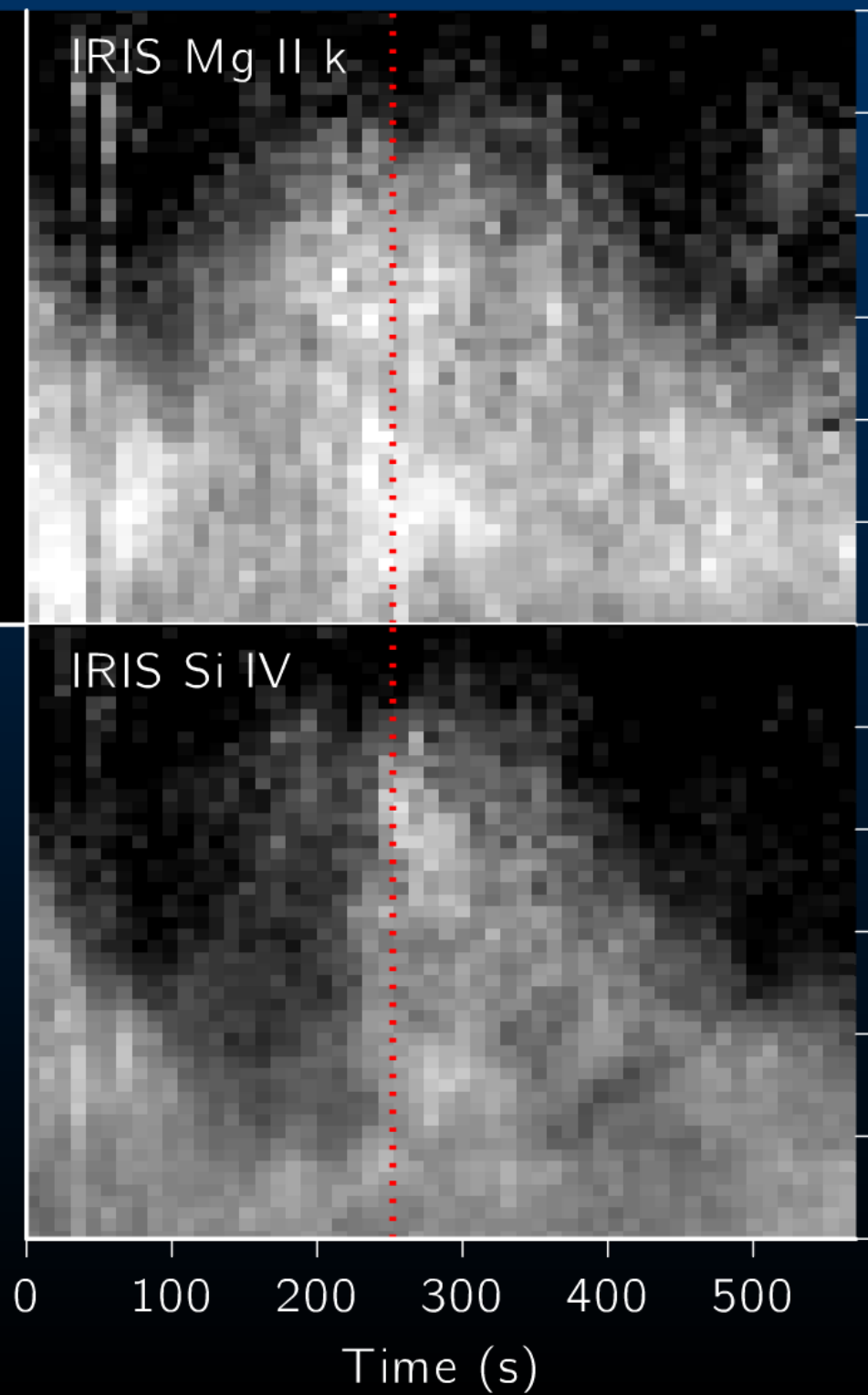
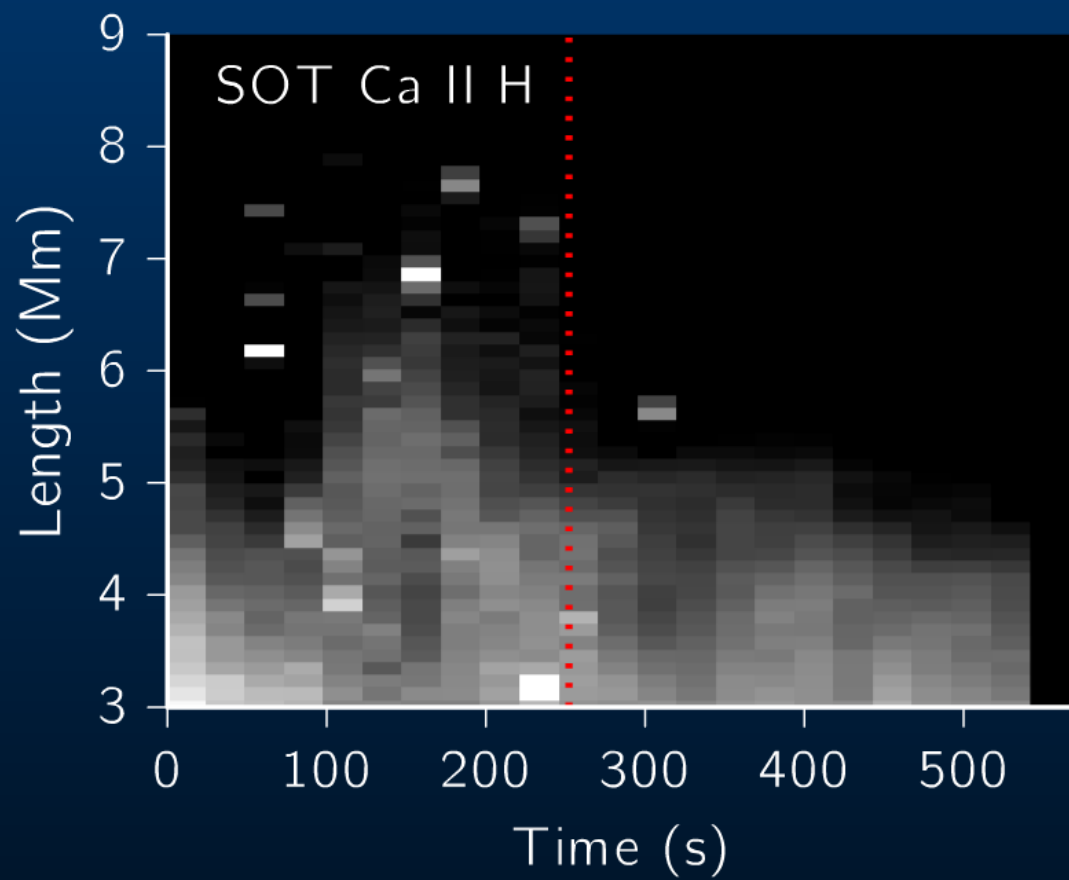
AIA He II 30.4



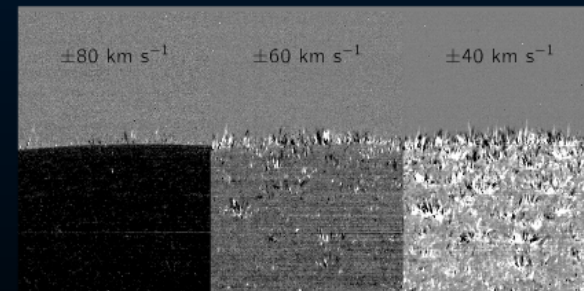
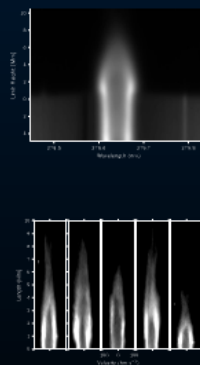
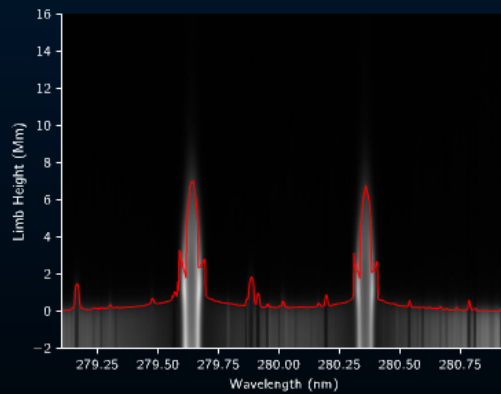
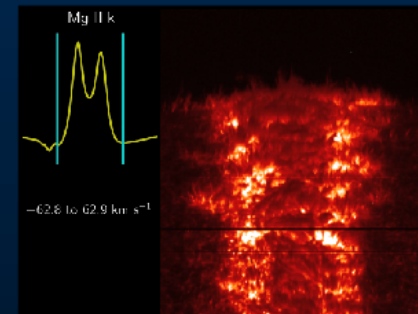
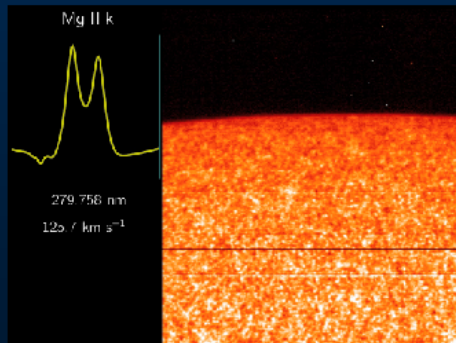
IRIS Si IV



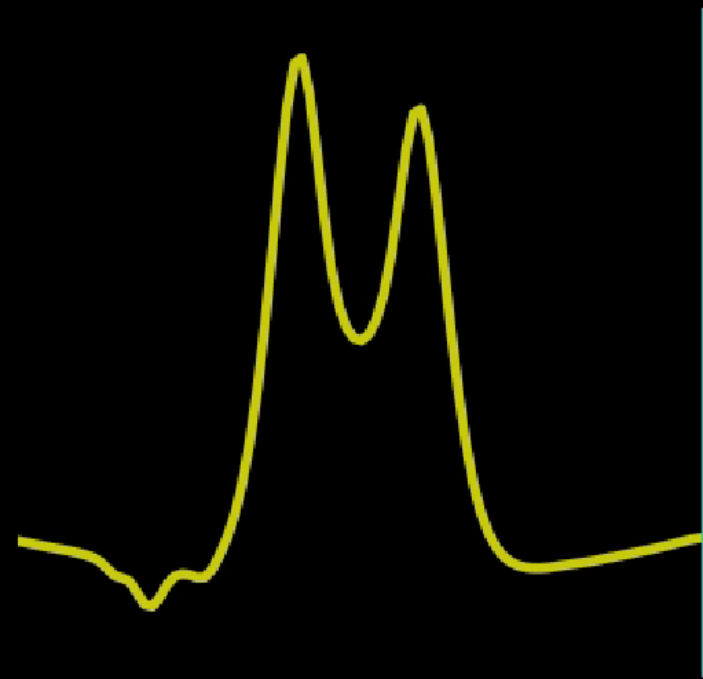




Multispectral

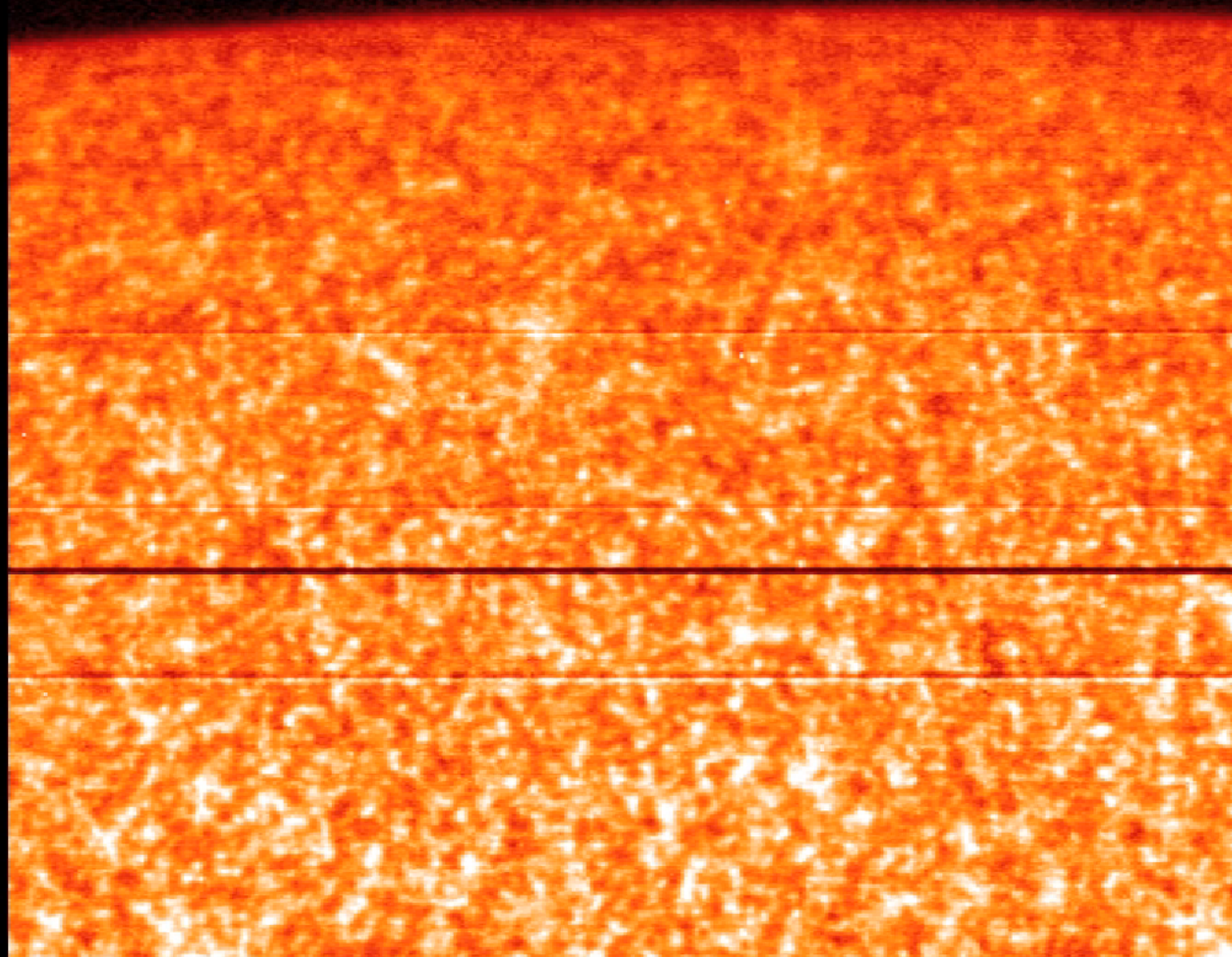


Mg II k

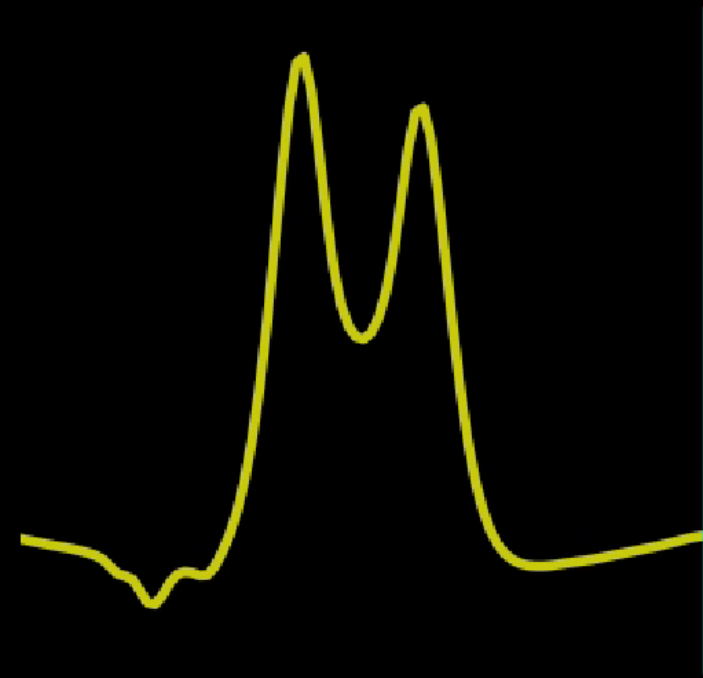


279.758 nm

125.7 km s⁻¹

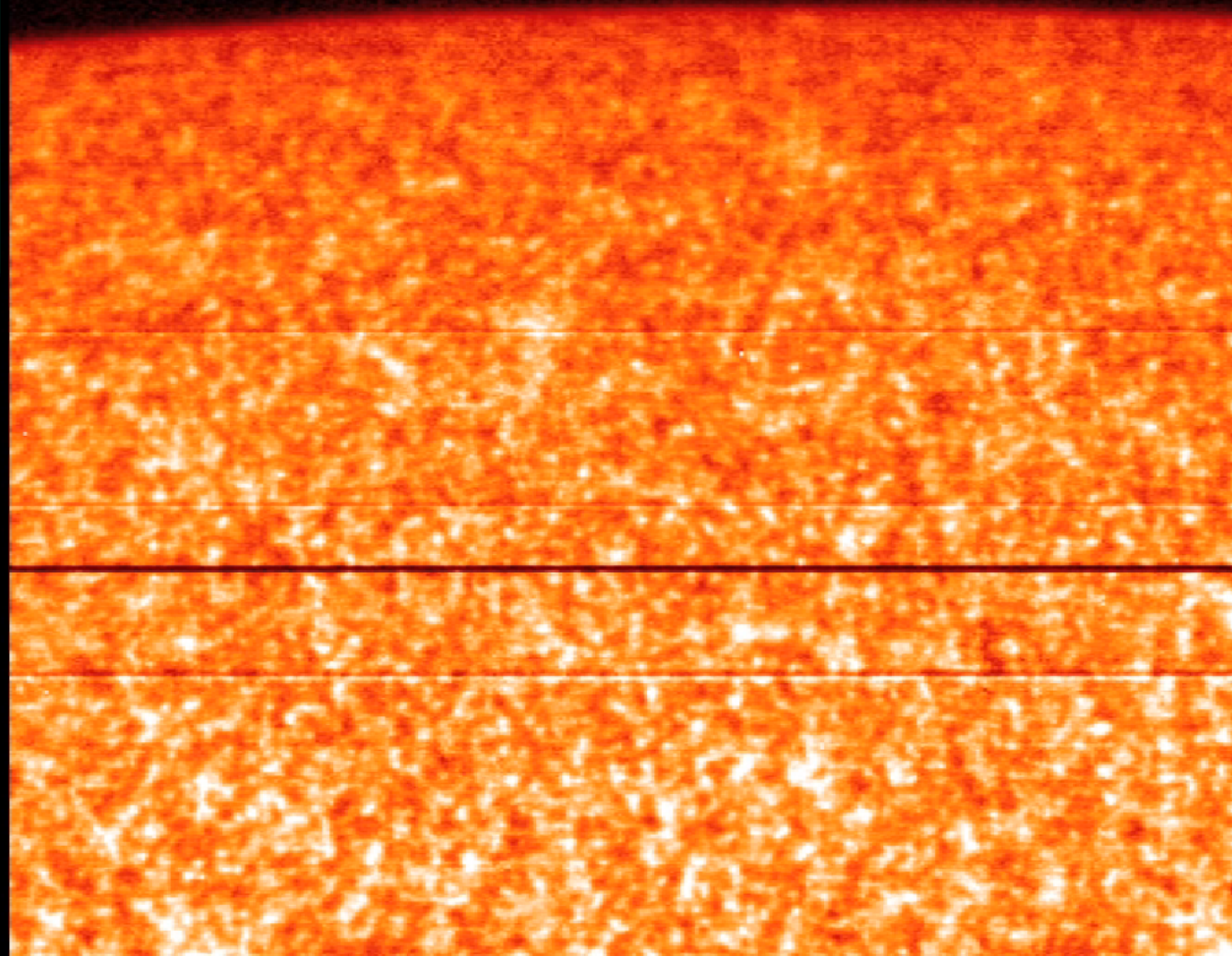


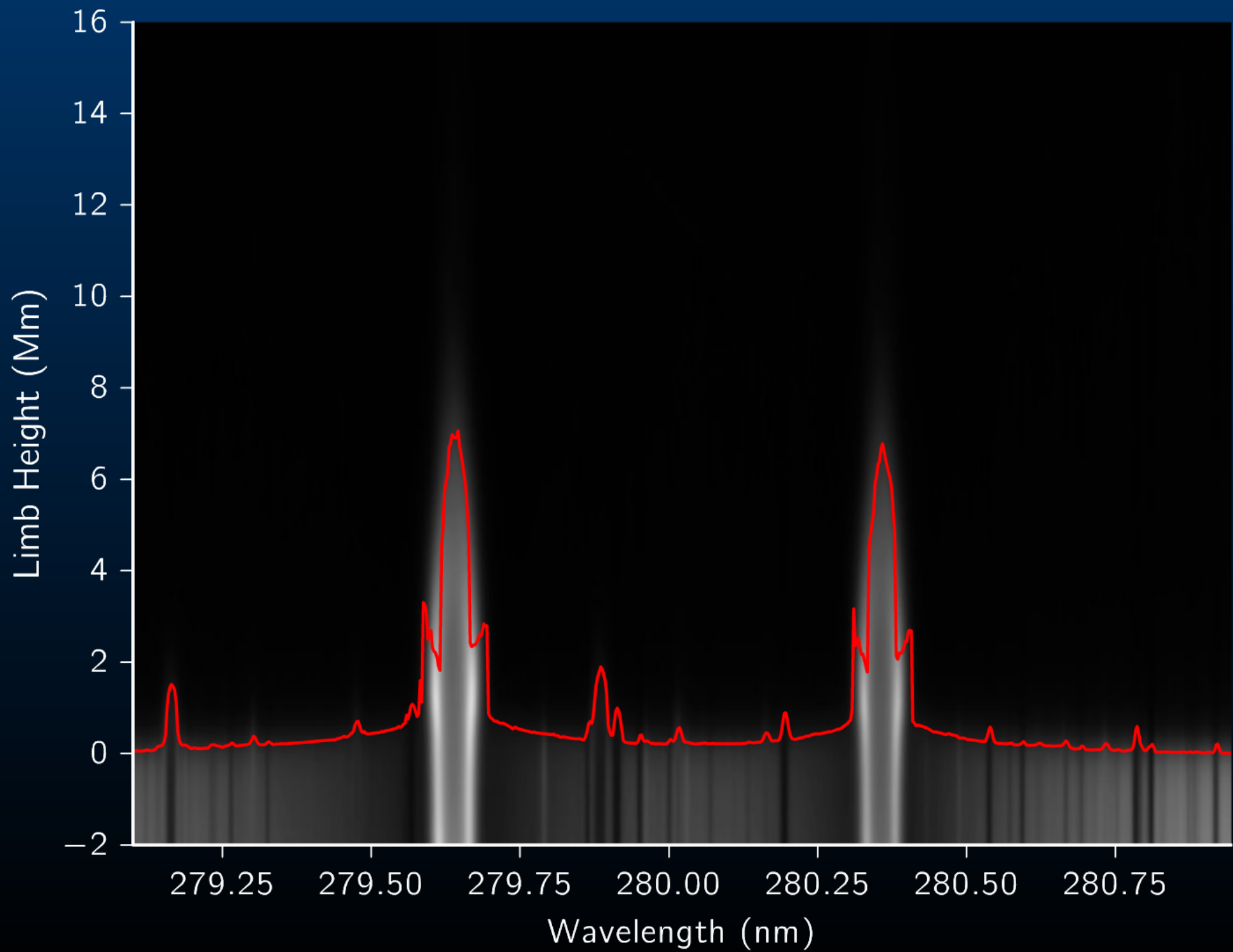
Mg II k

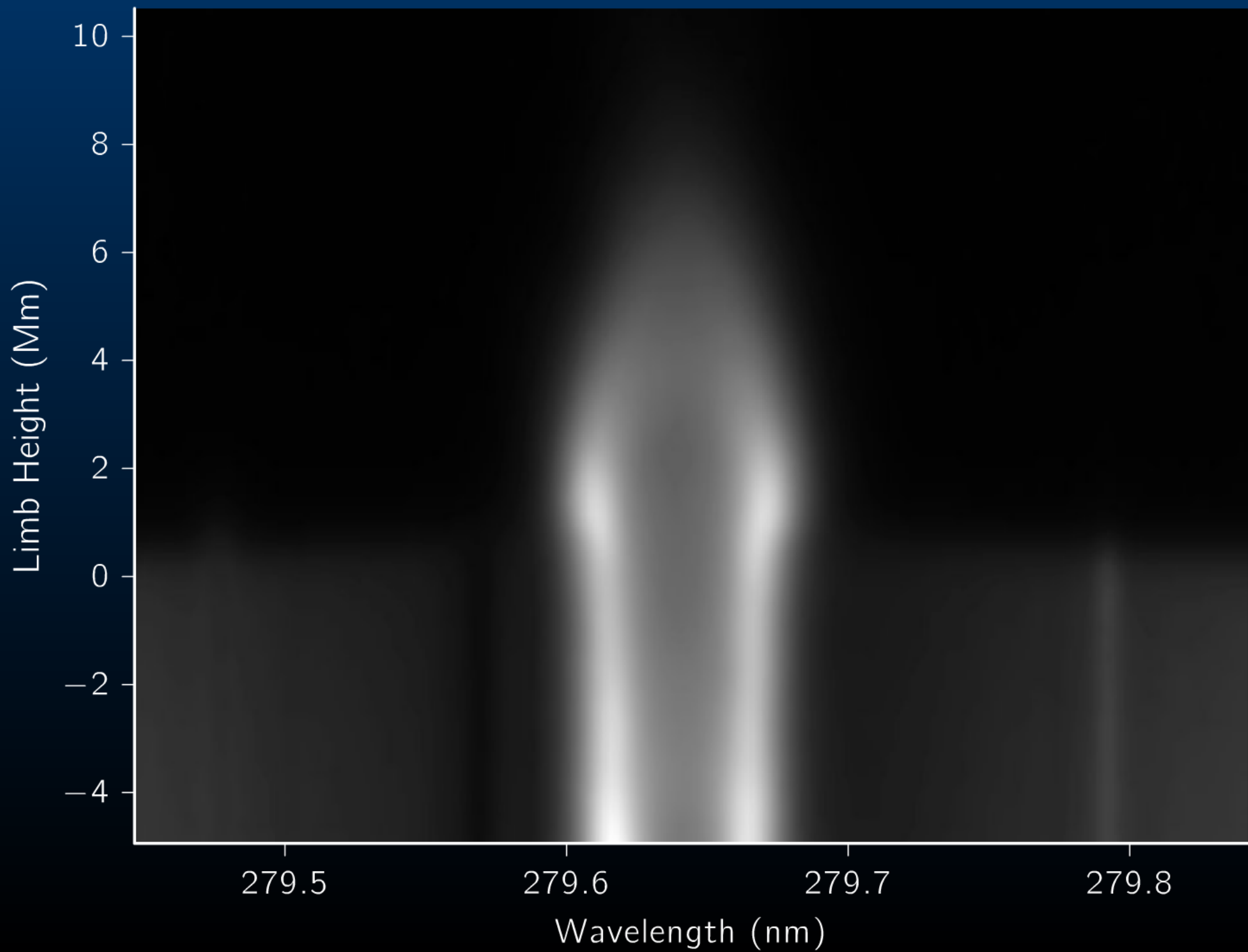


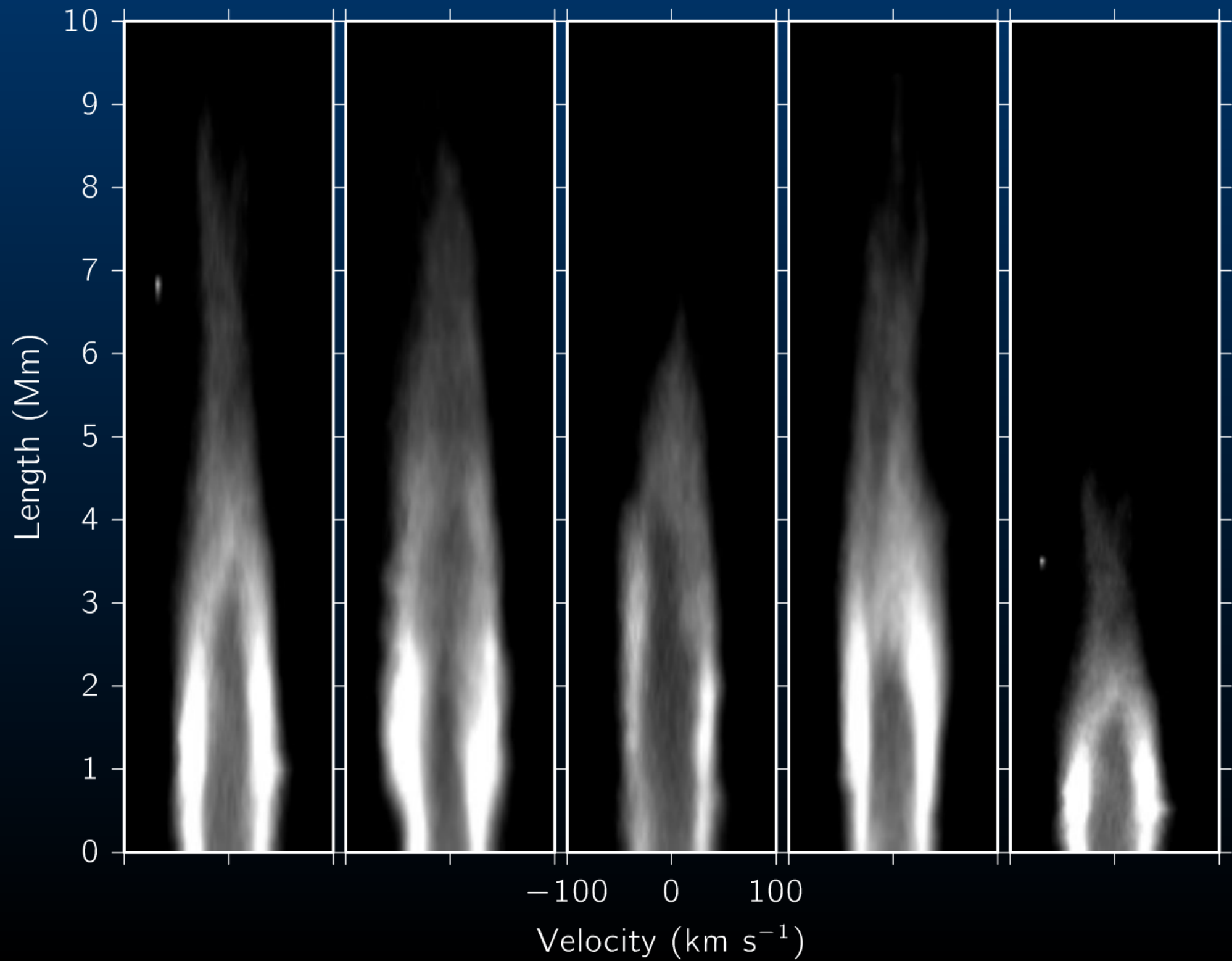
279.758 nm

125.7 km s⁻¹

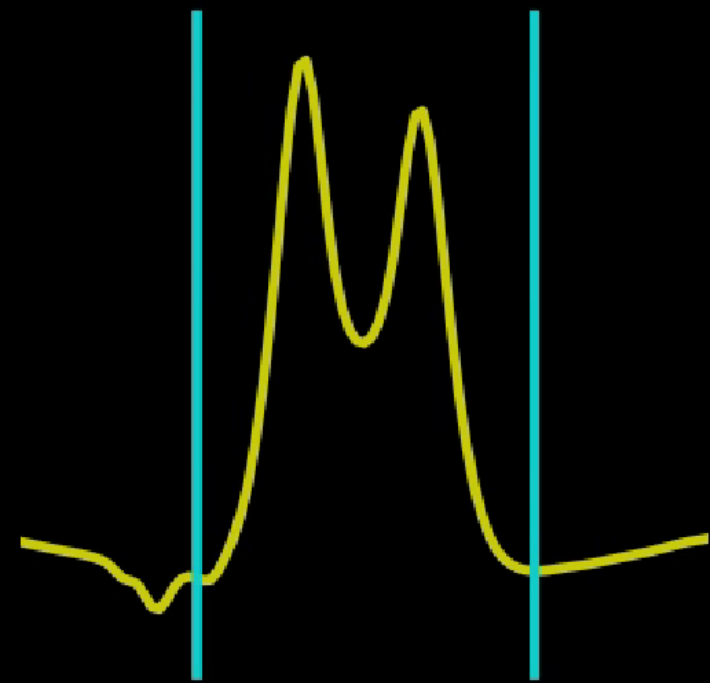




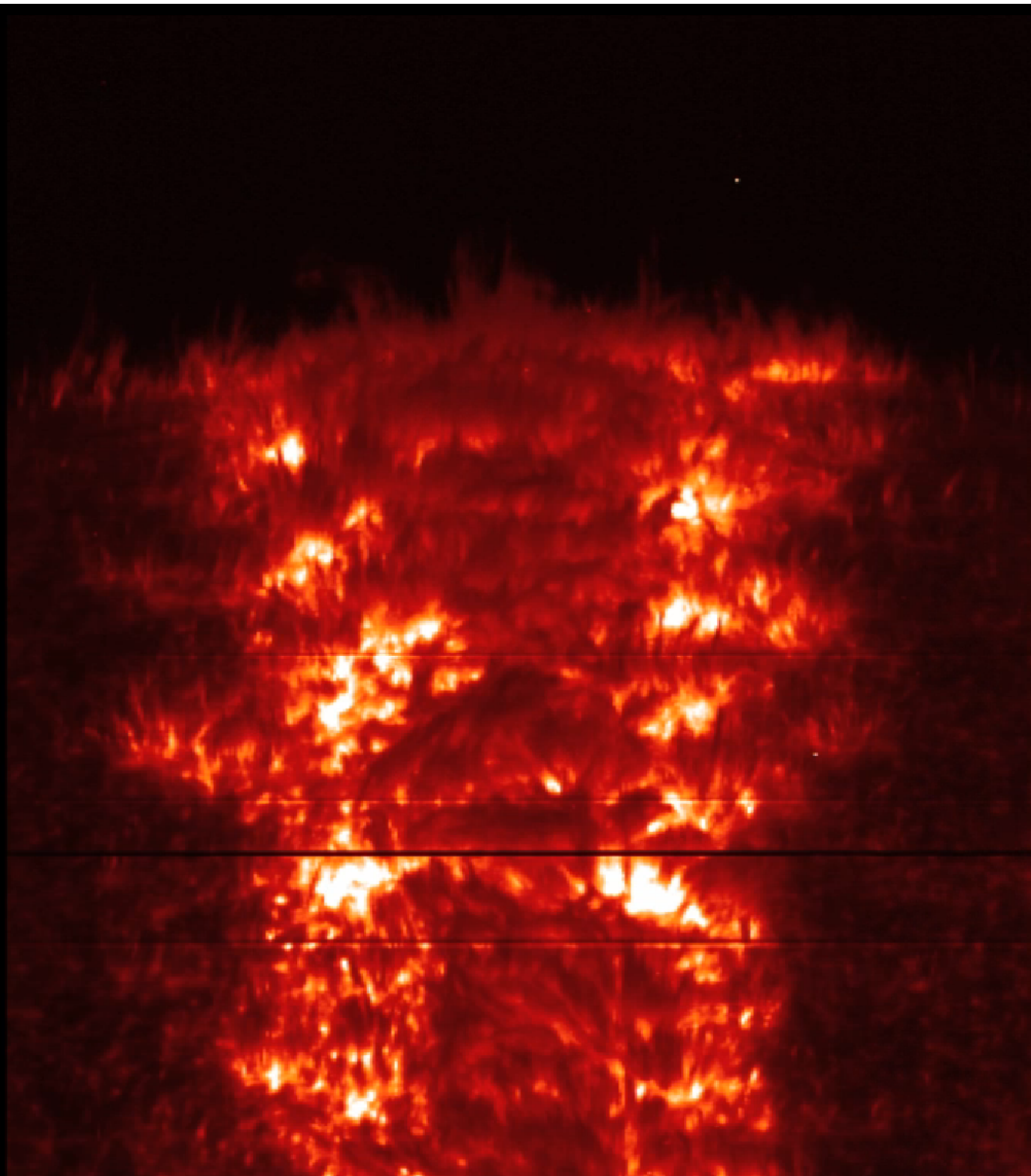




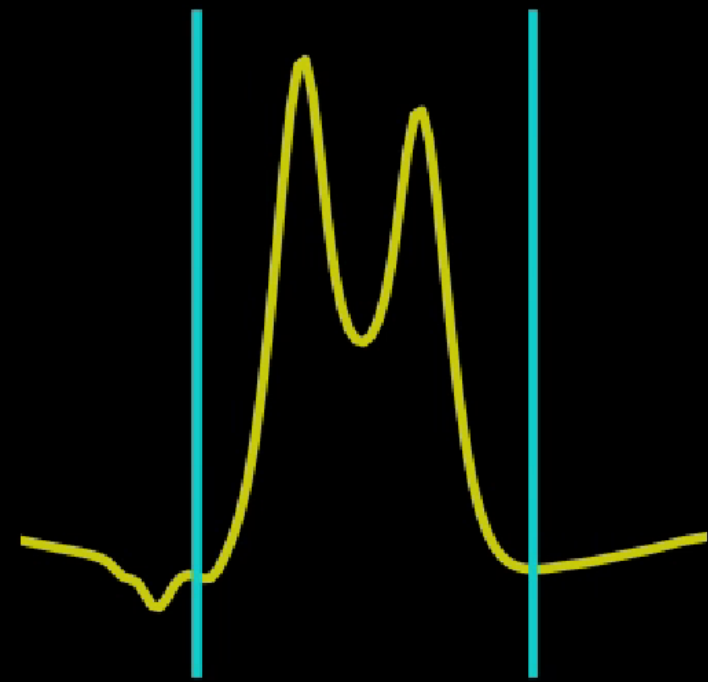
Mg II k



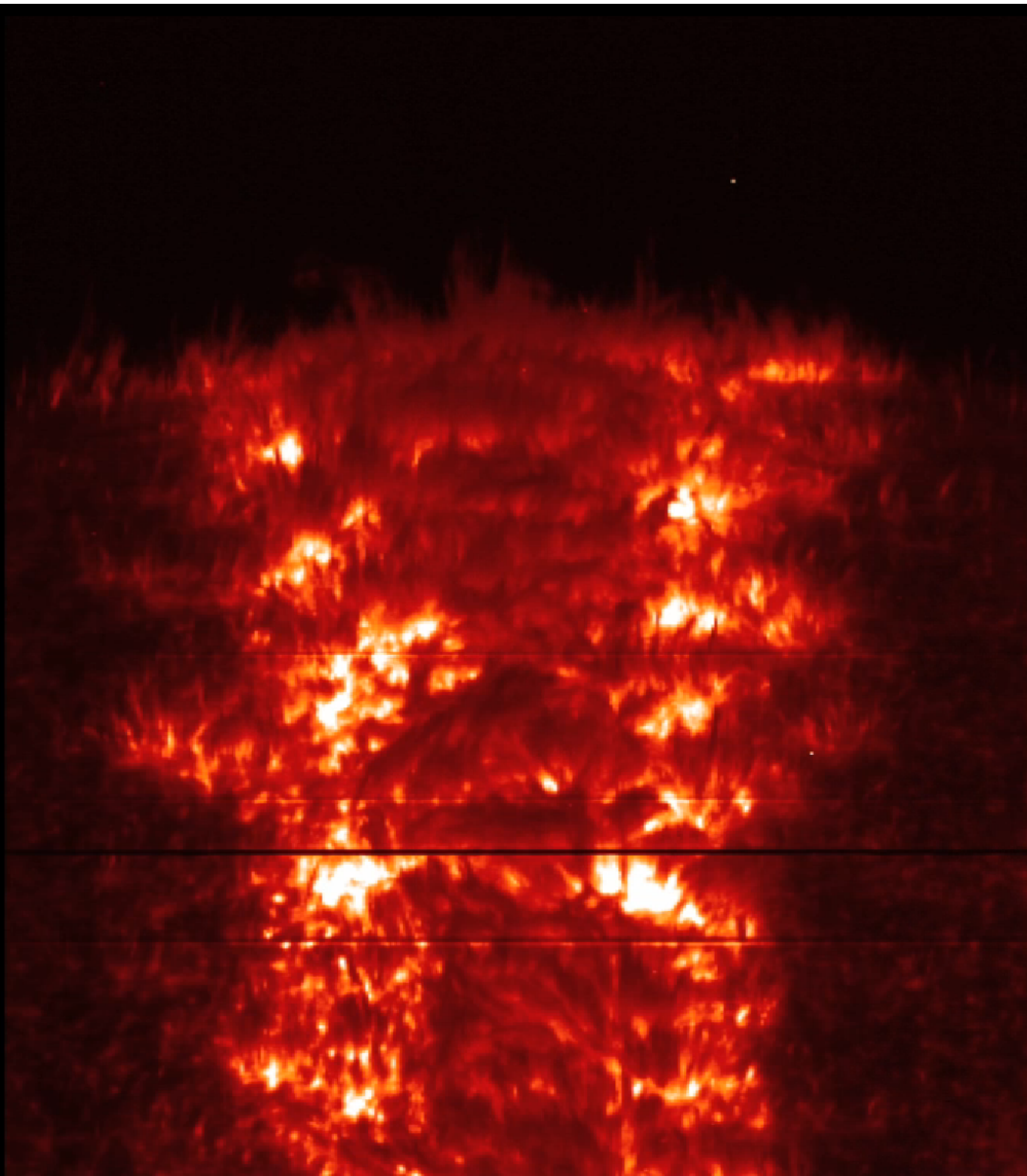
-62.8 to 62.9 km s⁻¹



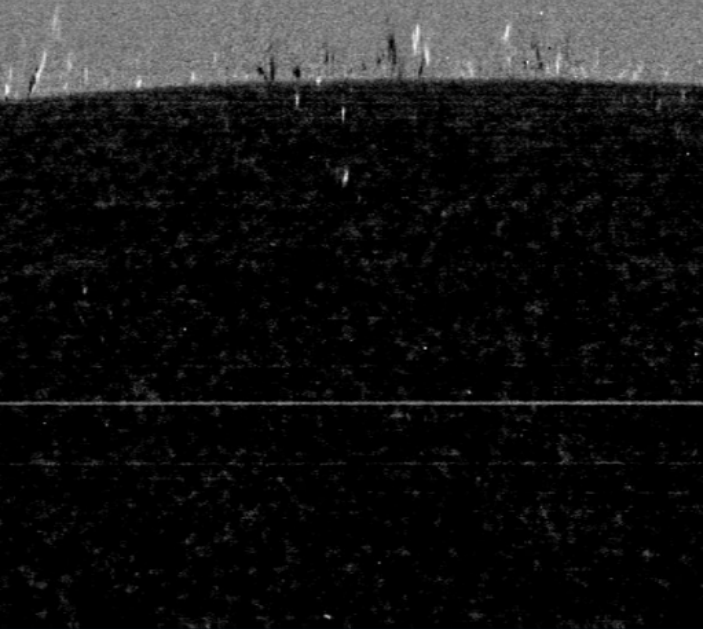
Mg II k



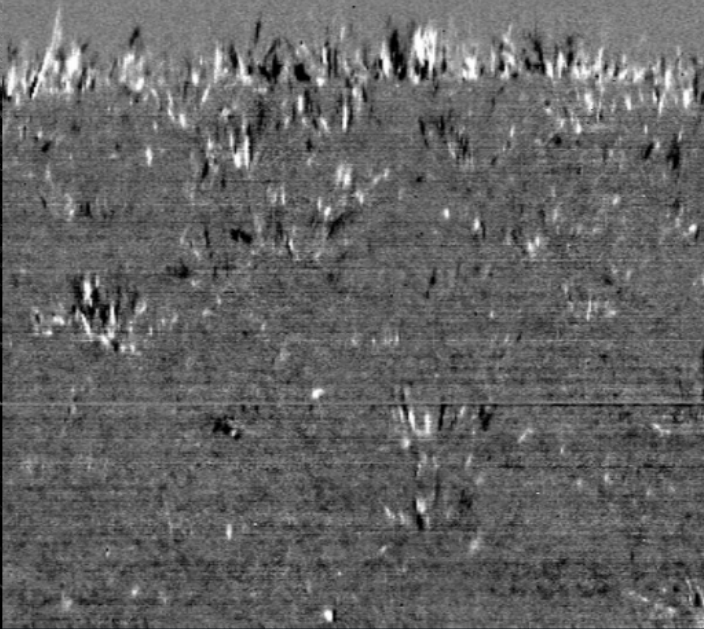
-62.8 to 62.9 km s⁻¹



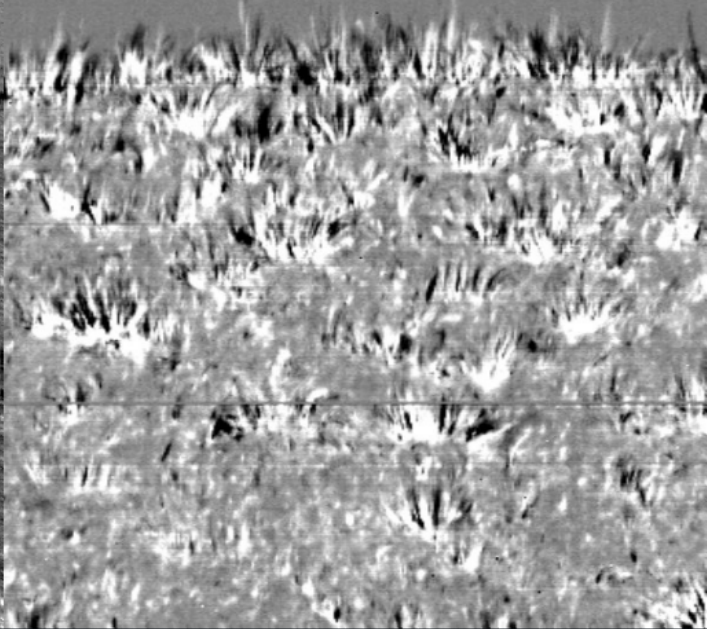
$\pm 80 \text{ km s}^{-1}$



$\pm 60 \text{ km s}^{-1}$



$\pm 40 \text{ km s}^{-1}$



Summary

- IRIS slit-jaws bridge Ca II spicules and higher temp filters
- **More co-observations with Hinode needed!**
- Preliminary results: longer spicules in IRIS filters, higher prevalence of parabolas, spicules continuing after fading from Ca H, consistent with heating
- **IRIS rasters very useful to find connection of spicules with lower and higher layers**
 - Spicules in Mg II h&k wings easily seen against background, even on disk
 - **Mg II h/k double peaked along most of spicular length, suggesting dense material**

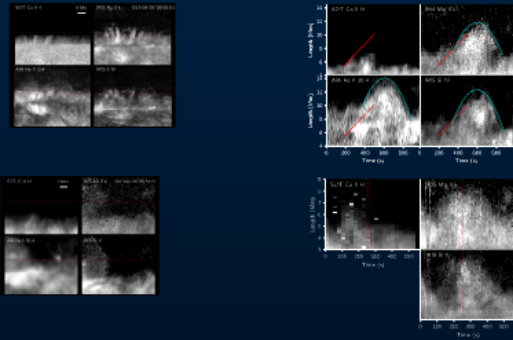
An IRIS look at spicules

Tiago M. D. Pereira

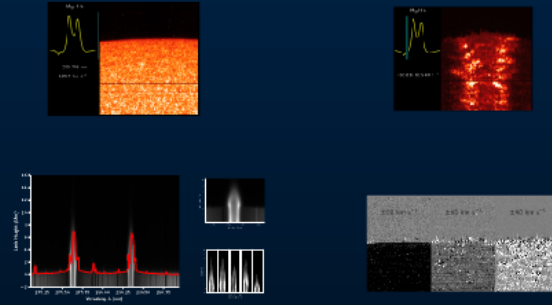
with Bart De Pontieu, Mats Carlsson



Dynamics



Multispectral



Summary

- IRIS slit-jaws bridge Ca II spicules and higher temp filters
- **More co-observations with Hinode needed!**
- Preliminary results: longer spicules in IRIS filters, higher prevalence of parabolas, spicules continuing after fading from Ca H, consistent with heating
- IRIS rasters very useful to find connection of spicules with lower and higher layers
 - Spicules in Mg II h&k wings easily seen against background, even on disk
 - Mg II h&k double peaked along most of spicular length, suggesting dense material

goo.gl/1zXtsu

